



# Pump Catalog

PT. KOLONI ENGINEERING  
NUSANTARA

# About Us”

---

We are a Company based in Jakarta, which by upholding our integrity in doing business we offer several products such as water pumps, and quality electric motors from well-known brands that can meet your needs. The products we offer are various such as, Torishima, Tsurumi, Ebara, and others. But we don't just offer pumps, we also offer service and repair services for your pumps.

By prioritizing customer interests, we are committed to providing the best service for you, this is shown by the existence of After Sales Service for you, our loyal customers. With these services, we hope that our company can be a good partner for your water pump.





### CAL / CAR

End Suction Volute Pump

- Capacity up to 640 m3/h
- Head up to 100 m
- Temperature -40 up to 350 C

Application :  
Utility, F&B, Oil,  
Petrochemical, General  
Industries, Sea Water  
Destination



### CAM

End Suction Volute Pump

- Capacity Up to 1320 m3/h
- Head Up to 100 m
- Temperature -40 Up to 350 C

Application :  
Utility, Irrigation, Food &  
Beverage, Petrochemical,  
General Industries, Cooling  
Tower, Sea Water Desalination



### CEN

End Suction Volute Pump

- Capacity Up to 620 m3/h
- Head to 100 m
- Temperature -10 Up to 100 C

Application :  
Utility, Irrigation, General  
Industries, Cooling Tower, Fire  
Fighting Pump



### CPC

Chemical Process Pump

- Capacity Up to 1500 m3/h
- Head Up to 229 m
- Temperature -100 Up to 350 C

Application :  
Process Pump, Chemical and  
Petrochemical Industries



### MMK - MML

Multi-Stage Turbine Pump

- Capacity Up to 600 m3/h
- Head Up to 500 m
- Temperature Up to 105 C

Application :  
Utility, Irrigation, Boiler,  
Cooling Tower



### MMO

Multi-Stage Pump

- Capacity Up to 130 m3/h
- Head Up to 400 m
- Temperature Up to 120 C

Application :  
Utility, Irrigation, Boiler,  
Cooling Tower



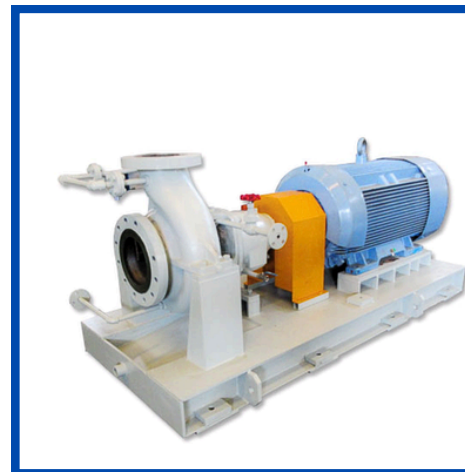
## CDM

Double Suction Pump

- Capacity Up to 6000 m<sup>3</sup>/h
- Head Up to 220 m
- Temperature Up to 80 C

Application :

Utility, Irrigation, Fire Fighting Pump, Cooling Tower, Sea Water, Oil & Mining Services



## CPR

Heavy Duty Process Pump (API 610)

- Capacity Up to 3490 m<sup>3</sup>/h
- Head Up to 240 m
- Temperature -70 Up to 400 C

Application :

Oil Refineries, Chemical and Petrochemical Industries



## CNO

Non Clogging Process Pump

- Capacity Up to 630 m<sup>3</sup>/h
- Head Up to 50 m
- Temperature Up to 100 C

Application :

Industrial Waste Water, Sugar Industry, Palm Oil Mills, Civil Engineering, Chemical Industry, Pulp & Paper, Mining

# TSURUMI PUMP



## KTV / KTVE

### Three-phase Portable Drainage Pumps

- Capacity Up to 55 m<sup>3</sup>/h
- Head Up to 35 m
- Discharge Bore 50 Up to 80 mm

**Liquid :** Drainage

**Additional :**

Lightweight compact pumps made of die-casted aluminium alloy. Automatic model with electrode type relay unit (KTVE).

## KRS

### High Volume Drainage Pumps

- Capacity Up to 720 m<sup>3</sup>/h
- Head Up to 35 m
- Discharge Bore 80 Up to 250 mm

**Liquid :** Drainage

**Additional :**

Suitable for high volume pumps



## KTZ

### Three-phase Drainage Pumps

- Capacity Up to 165 m<sup>3</sup>/h
- Head Up to 37 m
- Discharge Bore 50 Up to 150 mm

**Liquid :** Drainage

**Additional :**

Tsurumi flagship line of heavy-duty cast iron pumps. Multi-directional hose coupling (vertical and inclined)

## HS

### Single-phase Portable Drainage Pumps

- Capacity Up to 18 m<sup>3</sup>/h
- Head Up to 18 m
- Discharge Bore 50 mm

**Liquid :** Drainage

**Additional :**

Multi-field use pumps with agitator



## LH

### High-Head Drainage Pumps

- Capacity Up to 395 m<sup>3</sup>/h
- Head Up to 175 m
- Discharge Bore 80 Up to 200 mm

**Liquid :** Drainage

**Additional :**

Lineup of pumps with high head in consideration of discharge volume.

## LSC

### Single-phase Portable Residue Drainage Pumps

- Capacity Up to 10 m<sup>3</sup>/h
- Head Up to 11 m
- Discharge Bore 25 mm

**Liquid :** Residu Drainage

**Additional :**

Suitable for draining shallow standing water. Multi-directional hose coupling. Swing check valve prevents reverse-flow.



## LB

### Single-phase Portable Drainage Pumps

- Capacity Up to 25 m<sup>3</sup>/h
- Head Up to 17 m
- Discharge Bore 50 mm

**Liquid :** Drainage

**Additional :**

Multi-directional hose coupling (vertical and inclined)

## LSP

### Extra High-Head Drainage Pumps

- Capacity Up to 10 m<sup>3</sup>/h
- Head Up to 11 m
- Discharge Bore 25 mm

**Liquid :** Residu Drainage

**Additional :**

Suitable for draining shallow standing water. Can drain water at narrow space. Free positioning suction attachment.



# TSURUMI PUMP



## LH-W

### Extra High-Head Drainage Pumps

- Capacity Up to 120 m<sup>3</sup>/h
- Head Up to 216 m
- Discharge Bore 50 Up to 100 mm

**Liquid :** Drainage  
**Additional :**  
Comprised of dual impellers for extra high head pumping.

## NHB

### Sewage Pumps - Channel Impeller

- Capacity Up to 780 m<sup>3</sup>/h
- Head Up to 56 m
- Discharge Bore 100 Up to 300 mm

**Liquid :** Sewage  
**Additional :**  
Pumps using 4 poles motor. Channel impeller practically prevents internal clogging and enables to pump efficient.



## NHC

### Sewage Pumps - Cutter Impeller

- Capacity Up to 84 m<sup>3</sup>/h
- Head Up to 49 m
- Discharge Bore 50 Up to 80 mm

**Liquid :** Sewage  
**Additional :**  
This mechanism cuts incoming fibrous material into pieces, permitting smooth of fibrous material.

## KRS (Slurry)

### Slurry Pumps

- Capacity Up to 250 m<sup>3</sup>/h
- Head Up to 30 m
- Discharge Bore 80 Up to 200 mm

**Liquid :** Slurry  
**Additional :**  
Equipped with high-chromium cast iron impeller and agitator.



## NHU

### Sewage Pumps - Vortex Impeller

- Capacity Up to 60 m<sup>3</sup>/h
- Head Up to 21 m
- Discharge Bore 50 Up to 80 mm

**Liquid :** Sewage  
**Additional :**  
This semi-vortex design provides a solids passage that is 70% or more of the discharge bore.

## NKZ

### Slurry Pumps

- Capacity Up to 240 m<sup>3</sup>/h
- Head Up to 28 m
- Discharge Bore 80 Up to 150 mm

**Liquid :** Slurry  
**Additional :**  
Wide product lineup with agitator. Water jacket for forcibly cooling the motor at low water level.



## NH

### Sewage Pumps - Channel Impeller

- Capacity Up to 132 m<sup>3</sup>/h
- Head Up to 45 m
- Discharge Bore 50 Up to 150 mm

**Liquid :** Sewage  
**Additional :**  
Pumps using 2 poles motor. Channel impeller practically prevents internal clogging and enables to pump efficient.

## SFQ

### Corrosion-resistant Pumps

- Capacity Up to 120 m<sup>3</sup>/h
- Head Up to 43 m
- Discharge Bore 50 Up to 80 mm

**Liquid :** Corrosion Resistant  
**Additional :**  
Corrosion-resistant pumps made of 316 stainless steel casting. Suitable for acidic, chemical fluids of low pH value.



# TSURUMI PUMP



## GPN

### High Power Slurry Pump

- Capacity Up to 540 m<sup>3</sup>/h
- Head Up to 34 m
- Discharge Bore 80 Up to 200 mm

**Liquid :** Slurry

**Additional :**

Equipped with high-chromium cast iron impeller, suction plate and agitator. Water jacket for forcibly cooling the motor.



## GSD

### High Volume Slurry Pumps

- Capacity Up to 660 m<sup>3</sup>/h
- Head Up to 40 m
- Discharge Bore 200 Up to 250 mm

**Liquid :** Slurry

**Additional :**

Equipped with high-chromium cast iron impeller and agitator.



## TRN

### Submersible Aerator

- Capacity Air Flow Rate up to 600 m<sup>3</sup>/h
- Head Up to 40 m
- Discharge Air inlet Bore 32 up to 150 mm

**Liquid :** Sewage

**Additional :**

Pre-aeration and mixing at wastewater treatment plan, Supplying oxygen to water in aquafarm.

## SQ

### Submersible Stainless steel Pump - Vortex Impeller

- Capacity Up to 18 m<sup>3</sup>/h
- Head Up to 14 m
- Discharge Bore 40 Up to 50 mm

**Liquid :** Corrosion Resistant

**Additional :**

Corrosion-resistant pumps made of 316 stainless steel casting. Suitable for acidic, chemical fluids of low pH value



## BER

### Submersible Ejector

- Capacity Air Flow Rate up to 170 m<sup>3</sup>/h
- Head Water Depth up to 6 m
- Air inlet Bore 25, 32 and 50 mm

**Liquid :** Sewage

**Additional :**

Pre-aeration and mixing at wastewater treatment plan, Supplying oxygen to water in aquafarm



## UT

### Submersible Sewage - Vortex Impeller

- Capacity Up to 25 m<sup>3</sup>/h
- Head Up to 12 m
- Discharge Bore 40 up to 50 mm

**Liquid :** Slurry

**Additional :**

Transferring wastewater at small-scale treatment facility, Draining sewage from factory, residence, hotel, restaurant, etc





# EBARA



**DML**

Submersible Sewage Pumps  
(Single Channel Impeller)

**Specification**

- Capacity : up to 330 m<sup>3</sup>/h
- Head : up to 40m
- Speed : 1500 Rpm
- Temp. Max. : 40 ° C
- Max. Solid : 76mm
- Max Immersion : 8m

**Application**

- Sewage
- Waste Water



**DF**

Submersible Sewage Pumps  
(With Cutter)

**Specification**

- Capacity : up to 120 m<sup>3</sup>/h
- Head : up to 22m
- Speed : 1500 Rpm
- Temp. Max. : 40 ° C

**Application**

- Sewage
- Waste Water



**DL**

Submersible Sewage Pumps

**Specification**

- Capacity : up to 840 m<sup>3</sup>/h
- Head : up to 50m
- Speed : 1500 Rpm
- Temp. Max. : 40 ° C

**Application**

- Raw Sewage
- Domestic Sewage
- Industrial Waste Water



**DS**

Submersible Sump Pump

**Specification**

- Capacity : up to 90 m<sup>3</sup>/h
- Head : up to 39m
- Speed 3000 Rpm
- Temp. Max. : 40 ° C

**Application**

- Sump Pump Drainage
- Irrigation
- Rain & Spring Water Drainage
- Sump Dewatering



**DVS**

Submersible Semi Vortex  
Sewage Pumps

**Specification**

- Capacity : up to 60 m<sup>3</sup>/h
- Head : up to 24m
- Speed 3000 Rpm
- Temp. Max. : 40 ° C

**Application**

- Waste Water
- Industrial Drainage
- Septic Effluent
- Miscellaneous Drainage



**BEST**

Submersible Sump Pump  
in AISI 304

**Specification**

- Capacity : up to 10 m<sup>3</sup>/h
- Head : up to 9m
- Speed : 2800 Rpm
- Temp. Max. : 40 ° C

**Application**

- Draining Well
- Pool
- Small Scale Irrigation



# EBARA



3SF

**Specification**

- Flow Rate : Up to 240 m³/h
- Total Head : Up to 100 m
- Max. Working Pressure : 10 bar
- Max. temperature of the liquid : -5°C ÷ +90°C for standard models



CDX

**Specification**

- Three Phase : 230/400 V
- Power : 0.75HP, 0.55 kW
- Max. Pressure : 8 bar
- Max. Temperature : -10°C to +90°C
- Flow : 50 - 180 l/min
- Head : 12.5 - 20.5 meter



JESXM

**Specification**

- Temperature: 45°C.
- Impeller Type: Single.
- Impeller Stages: 1.
- Electrical supply: 230V.
- AC Power: Single Phase.
- Flow Rate: 45 Ltr/min.



JEXM

**Specification**

- Power : 0.88kW, 1.2HP
- Capacitor : 20µF, 450V
- Input : 1.39kW
- Full Load Current : 230V, 6.7A
- Locked Rotor Current : 22.7A
- Impeller diameter : 141mm



MATRIX

**Specification**

- Flow Rate : Up to 27 m³/h
- Total Head : Up to 97 m
- Max. Working Pressure : 10 bar
- Poles : 2
- Insulation Class : F
- Protection Degree : IP55
- Voltage : Single-phase 1~230V ±10%



DWO

**Specification**

- Power : 3 kW, 4 HP
- Max Flow : 66 m³/h
- Max Head : 17.5 m
- Liquid Temperature : -5~90°C
- Max Pressure : 0.8 MPa



# EBARA



**EVMMSG**

**Specification**

- Flow Rate : 1, 3, 5, 10, 15, 20, 32, 45, 64, 90 m<sup>3</sup>/h
- Total Head : 249 m
- Max. Working Pressure : 1.6, 2.5, 3.0, 3.5 MPa (16, 25, 30, 35 bar)
- Max. Temperature Of The Liquid : -30°C ÷ +140°C



**EVM**

**Specification**

- Max. Working Pressure : 16 bar, 25 bar, 30 bar
- Max. Temperature Of The Liquid : -15 °C hingga 120 °C
- Max. Solid. : 50 ppm
- Density Ion Klorin Max : 500 ppm



**EVMMS**

**Specification**

- Flow Rate : 1, 3, 5, 10, 15, 20, 32, 45, 64, 90 m<sup>3</sup>/h
- Total Head: 249 m
- Max. Working Pressure : 1.6, 2.5, 3.0, 3.5 Mpa (16, 25, 30, 35 bar)
- Max. Temperature Of The Liquid : -30°C ÷ +140°C



**SQPB**

**Specification**

- Capacity : 0.35 m<sup>3</sup>/Min
- Head : 3-7-11-15-18 m
- Speed : 1450-1750-2000-2250-2400
- Rpm Power : 2.2-3.7-5.5-7.5-11 kW.



**SZ**

**Specification**

- RPM : 490-930
- Power : 11 ~ 75
- Capacity : 2.5 ~ 35 m<sup>3</sup>/min
- Head : 4.5 ~ 17 m



**FSA**

**Specification**

- Max Head : 150 m
- Max. Working Pressure : 16 Bar
- Max. Temperature Of The Liquid : 0°C to 80°C



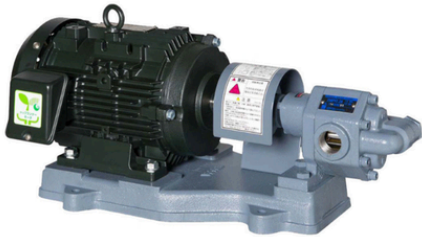
**GS**

**Specification**

- Max. Head : 150 m
- Max. Working Pressure : 25 Bar
- Max. Temperature Of The Liquid : -10 - 140 C



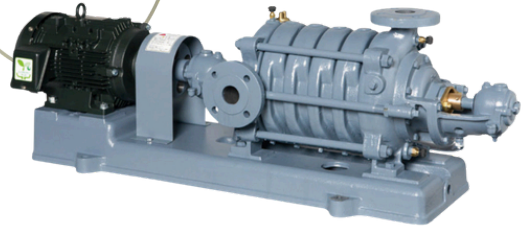
# EBARA



GPE

**Specification**

- Liquid Temperature : 0 - 70°C
- Discharge Size : 12 to 25mm 12 to 40mm ( 3 / 8 to 1 inch)
- Discharge Pressure : 3kgf/cm2
- Allowable Suction Pressure : - 0.3 to + 1.0kgf/cm2
- Temperature Limit : 70°C (158°F) 80°C (176°F)
- Construction : Shaft Seal, Gland packing
- Connection Screw-in



MS

**Specification**

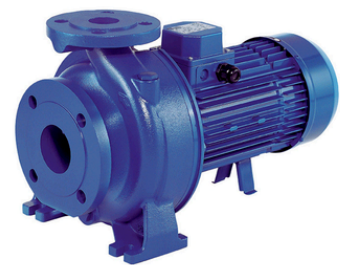
- Liquid Temperature : 0 - 80°C
- Total Suction Head : -6m at 20°C
- Max. Suction Pressure : 0.4Mpa (4 kgfcm2)
- Temperature Limit : 81 - 100°C
- Construction : Shaft Seal, Gland packing
- Impeller : End Closed



3D

**Specification**

- Power : Ebara 4Kw/5.5Hp
- Speed : 2900RPM
- Voltage : 380V/3phase 50Hz
- Capacity : 650 liter/menit
- Max. Head : 20 meter
- Impeller : Stainless steel 304
- Casing : Cast Iron
- Construction : Shaft Seal, Mechanical Seal
- Max Temperature : 0 - 90 derajat celcius



MD

**Specification**

- Flow Rate : Up to 600 m³/h
- Total Head : Up to 92,7 m
- Max. Working Pressure : 10 bar
- Max. Temperature Of The Liquid : -5°C ÷ +75°C for H, HS, HW, HSW
- Poles : 2 and 4
- Insulation Class : F (B for high temperature)
- Protection Degree : IP55

# ELECTRO MOTOR

## YUEMA

- Available Range : 0.09HP ~ 25HP
- Specifications : IE1 EFFICIENCY, S1, 3 PHASE, ALUMINIUM CASING, TOP TERMINAL BOX, CLASS F INSULATION, IP55 PROTECTION, BEST CHINA BEARING, 50/60HZ
- 3 Phase, Mounted : B3, B5, B35, B14, B34
- Voltage : 0.09HP ~ 5.5HP = 220/380V ; 5.5HP ~ ABOVE = 380/660V
- Made In China



## TITAN

- Power : 0.18 kW ~ 250 kW
- Specifications : IEC, CLASS F INSULATION, IP55 PROTECTION, 50HZ
- 3 Phase, Mounted : B3, B5, B35
- Voltage : 380V
- Made In China



## SEW EURODRIVE

- Power Range : 0.09 kW to 225 kW
- Specifications : IE1, IE4
- Operational Voltage: Typically 230 V / 400 V, or 400 V / 690 V at a Frequency 50 Hz
- Operating Frequency: Available for 50 Hz to 60 Hz
- Insulation Class: Class F and Class H options for extreme environments.
- Environmental Protection: IP55 standard and upgradeable up to IP65 or IP66.



## TECO

- Available Range : 0.75HP ~ 270 HP
- Pole : 2P/4P/6P
- Specifications : IE1, 3 PHASE, TOP TERMINAL BOX, CLASS F , IP55, GREY COLOR
- Voltage : 0.75HP ~ 5.5HP = 220/380V/50Hz ; 7.5HP ~ ABOVE = 380/660V/50Hz
- 3 Phase, Mounted : B3, B5, B35
- Made In Taiwan



## Elektrim

- Available Range : 0.08HP ~ 430HP
- Pole : 2P/4P/6P/8P
- Specifications : IE1 EFFICIENCY, S1, 3 PHASE, CLASS F INSULATION, IP55 PROTECTION, 50/60HZ
- Voltage : 63A ~ 112M = 220/380 V ; 132SA ~ ABOVE = 380/660 V
- 3 Phase, Mounted : B3, B5, B35, B14, B34
- Made In Poland

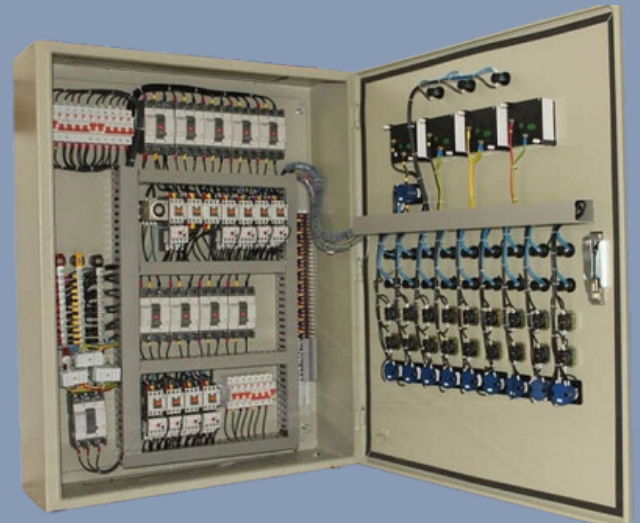


# Electrical Panel



We provide wall-mounted electrical panels for all kinds of needs

Our electrical panel specifications can be adjusted to comply with all your requirements and requests



All assembly details may be communicated and discussed with us to ensure alignment with your requirements

## Contact

Phone : 0813 6777 7946 | 0813 6777 7841

Email : [sales@koloniengineering.com](mailto:sales@koloniengineering.com)  
[info@koloniengineering.com](mailto:info@koloniengineering.com)

Website : [koloniengineering.com](http://koloniengineering.com)



## Office

Ciputra International, Tokopedia  
Care Tower Lt. 15 Unit 10, Jl. Lkr.  
Luar Barat No. 101, RT. 014  
RW.004, Kel. Rawa Buaya, Kec.  
Cengkareng, Jakarta Barat 11740